




ENJOY THE DOLCE VITA





08. Brand



18. Kosmo
22. Kosmo Low-Profiles 200/500-2009
34. Kosmo Overcabs
46. Kosmo Motorhomes
62. Plans



-
- 104. Kreos
 - 108. Kreos Low-Profiles
3000/4000
 - 124. Kreos Low-Profiles 5000
 - 140. Kreos Motorhomes 7000
 - 156. Kreos Motorhomes 8000
 - 172. Plans

-
- 66. Ecovip
 - 70. Ecovip Low-Profiles 100/300/400
 - 84. Ecovip Motorhomes 600/700
 - 100. Plans



-
- 176. Atelier

Searching for beauty is in our nature.

— More than a philosophy:
a lifestyle







— Beauty starts
from inside.



Brand

Insulation for all seasons

Brand - Insulation

Whether Summer or Winter, the temperature inside Laika motorhomes is always the right one, thanks to the use of extruded polystyrene foam XPS for insulation. It is optimised, thanks to the thickness of the floors (up to 62 mm), the roof (up to 40 mm) and the walls (34 mm).





— Feel at home wherever you are.

Feel at home wherever you are: Laika motorhomes have a domestic-style water system in which the clean and recovery water tanks and their exhaust valves are in frost-proof position (with the exception of the 100 and Kosmo series, for the recovery tank).

Many Laika models are equipped with a double floor that protects the living space even from the coldest cold.

The functional design of Laika motorhomes

The sinuous shapes, the elegance of the furniture and the adjustable lighting design make each trip a unique experience.

Brand - Design





Dolce Vita: surrounding yourself with beauty even in the smallest things. Like the quality upholstery, unique in every Laika, easy to wash.



8012

The compactness and elegance of the kitchens

Everything is in the right place in Laika kitchens. Easy and practical use of appliances and a wide choice of table types to meet the tastes and needs of all customers.





— Experiencing beauty
surrounded by Italian
luxury and elegance.

Surrounding yourself with beauty does not mean compromising on comfort. That's why Laika models are equipped with wall units with practical doors and handles by Laika. Seats and backrests are ergonomic, padded with a double layer for supreme comfort.



Large storage for comfortable travel

Laika motorhomes, with an internal height ranging from a minimum of 2 m up to 2.13 m, are comfortable even for taller travellers.

— Intelligent space, for
height and storage.

Thanks to a careful design, the wall units provide ample storage space with their 54 cm height and 40 cm depth, while the large garage will allow you to spend a comfortable and relaxing holiday.

Brand - Storage





Elegant and spacious rooms

With Laika motorhomes you can sleep and rest like at home, thanks to the huge choice of beds catering for our customers' every need.

High comfort mattresses for quiet dreams with "sanitised" stretch material covers, breathable and machine washable.



— Opening yourself up to beauty, welcoming adventure, getting to know new places and new people.



Kosmo

Start a new lifestyle

KOSMO





Changing horizons

Kosmo fits everyone without compromise.
Look at the world from a new perspective.
Fall in love with a landscape and then leave again.

Kosmo

It's the small details that
make a big difference.





Kosmo Low-Profiles



Kosmo Low-Profiles 200/500/2009



The equipment which makes the difference

DESIGN & BODYWORK

- Driver and passenger side dashboard airbags
- Electrical power windows in cab
- Day lights built into headlights
- Headlight levellers
- Cup holder in cab
- 12 V and USB outlet in cab (max 180 W)
- Ergonomic, very comfortable cab seating with removable covers in fabric coordinated with living room
- Walls, roof and floor highly insulated with extruded polystyrene foam (XPS)
- Aluminium external walls, anti-yellowing
- Roof lined in hail protection fibreglass
- Fibreglass sub-floor in living area
- Rear designer wall
- High quality, flat frame windows with aluminium frame, blind and mosquito net
- External black/silver design graphics
- Exclusive Laika XXL living space door, 70 cm width, with fixed window, blind and insect screen
- Aluminium side skirts
- External LED light
- Centralised cab and living space door closure
- Single door key
- Large heated, insulated and lit garage and locker, "Easy Lock" locks
- Garage capacity 150 kg

INTERIOR & COMFORT

- Facilitated entrance with internal step ("coupé" entrance)
- Multi-level indirect lighting in lounge, kitchen and bedroom (under wall units), to create pleasant atmospheres
- Comfortable internal headroom with 213 cm: more space and stowage
- Pull up curtains
- Increased door wall units with metal handles, Laika exclusive
- High gloss white wall units doors
- Ergonomic L-shaped living area with household type cushions for the best comfort (Kosmo 509L and Kosmo 512: living area with opposing side sofas)
- Lounge cushions with removable lining
- Height-adjustable living room headrests (not for Kosmo 512 and Kosmo 509L)
- Extremely comfortable table which can be moved in all directions with easy handling
- 70x50 cm roof-light in living area (b)
- Panoramic, opening roof-light over the driving cab
- Electric foldaway bed above lounge (opt) (b) with one or two USB outlets, reading lights and with height under folding bed of 195 cm
- Shoe compartment at living space entry (Kosmo 212 and Kosmo 509)
- Manually height-adjustable rear bed (Kosmo 512)
- Back, highly comfortable, breathable mattresses with machine washable stretch lining
- Rear beds with wooden staves
- Adjustable reading lights on rear beds
- Extensive customisation possibilities

KITCHEN & BATHROOM

- Trivalent 140 l refrigerator with automatic energy source selection (AES), with smoky covering and external inspection grille
- Scratch and fingerprint resistant kitchen and table tops
- Kitchen window design panel in metallic silver with brushed effect
- Dark glass protection panels for kitchen walls
- High gloss white kitchen with exclusive Laika handles
- Chromed sink
- Multi-purpose sink cover cutting board
- Sliding rail on right hand kitchen side: it allows to position the sink cover/ cutting board (extra work space), not for Kosmo 509L and Kosmo 512
- Indirect lighting under kitchen top
- 3-burner stove
- Automatic soft-close drawers
- Chrome metal spice rack shelf
- 230 V outlet in kitchen
- 40x40 cm roof-light in kitchen
- Possibility of bathroom window (opt)
- Waste water tank (antifreeze) with 18 l cassette

Dinette

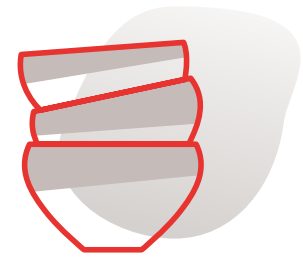
Travel to new destinations in comfort and style. With the spacious L-shaped face-to-face dinette and the comfortable adjustable seats, there is room for everyone and everything.



909



512



—
Space for
adventure.



509

Kosmo Low-Profiles 200/500/2009

Kitchen

All the taste of a beautiful holiday thanks to the wall units with oversized doors and metal handles exclusive to Laika.



Everything in
its place





512



Sleeping area

A good-nights sleep will make your holiday even more enjoyable. Made possible thanks to the high quality Kosmo mattresses with machine-washable covers.

Kosmo Low-Profiles 200/500/2009



Relax then
start exploring
again.



909



509



Bathroom

Refresh and relax: a bathroom tailored to your needs.

Kosmo Low-Profiles 200/500/2009





—
Your
relaxation
area.







LARK

KOSMO F510

Kosmo Overcabs



Kosmo Overcabs F200/F500



The equipment which makes the difference

DESIGN & BODYWORK

- White driving cab with bumpers painted in white
- Front wheel drive
- Enlarged rear track
- Electronic Stability Control: ESP specific for campers, ABS, ASR, Hill Holder and Roll Over Mitigation
- Front and rear sway bar
- 6-speed + 1 manual gearbox
- Driver and passenger side dashboard airbags
- 75 l diesel tank
- Electrical power windows in cab
- Day lights built into headlights
- Headlight levellers
- Cup holder in cab
- 12 V and USB outlet in cab (max 180 W)
- Swivel cab seating with headrest, two armrests, inclining backrest
- Height adjustable driver's cab seat
- Ergonomic, very comfortable cab seating with removable covers in fabric coordinated with living room
- Adjustable height steering wheel
- Walls, roof and floor highly insulated with extruded polystyrene foam (XPS)
- Aluminium external walls, anti-yellowing
- Roof lined in hail protection fibreglass
- Fibreglass sub-floor in living area
- Rear designer wall
- High quality, flat frame windows with aluminium frame, blind and mosquito net
- External black/silver design graphics
- Exclusive Laika XXL living space door, 70 cm width, with fixed window, blind and insect screen
- Aluminium side skirts
- External LED light

- Centralised cab and living space door closure
- Single door key
- Large heated, insulated and lit garage and locker, "Easy Lock" locks
- Garage capacity 150 kg
- Spacious attic with external ABS cover
- Two porthole windows in attic
- Roof-light in attic

INTERIOR & COMFORT

- Easy access living space with internal step ("coupé" entrance)
- Multi-level indirect lighting under wall units in lounge, kitchen and bedroom (bedroom only for Kosmo F510), to create pleasant atmospheres
- Comfortable internal headroom with 209 cm: more space and stowage
- Interior design "Pero Toscano"
- "Pavia" upholstery with stain protection treatment
- Pull up curtains
- Increased door wall units with metal handles, Laika exclusive
- High gloss white wall units doors
- Classic living area with household type cushions for the best comfort
- Lounge cushions with removable lining
- Height-adjustable living room headrests
- Extendable table (opt) up to 140 cm and two additional seats in living, 35x39 cm (opt)
- Roof-light 70x50 cm in living area
- Back and attic mattresses, high comfort, with machine washable stretch lining
- Rear beds and drop-down bed with wooden staves

- Adjustable reading lights on rear and drop-down beds
- Bedframe in attic, reclinable
- Extensive customisation possibilities

KITCHEN & BATHROOM

- Trivalent 113 l refrigerator with automatic energy source selection (AES), with smoky covering and external inspection grille
- Scratch and fingerprint resistant kitchen and table tops
- Kitchen window design panel in metallic silver with brushed effect
- Dark glass protection panels for kitchen walls
- High gloss white kitchen with metal handles, Laika exclusive
- Chromed sink
- Multi-purpose sink cover cutting board
- Indirect lighting under kitchen top
- Additional kitchen worktop, folding
- 3-burner stove
- Automatic soft-close drawers
- Chrome metal spice rack shelf
- 230 V outlet in kitchen
- 40x40 cm roof-light in kitchen
- Bathroom window
- Waste water tank (antifreeze) with 18 l cassette

Dinette

Wherever you want to go, you'll get there comfortably. Kosmo's living room is ergonomic and features high comfort cushions and upholstery. The magic of the Kosmo overcab adds practicality to beauty. This is demonstrated by the table that can be extended up to 140 cm (optional) and the two foldable panels that add two cushioned seats (for a total of 6 seats for lunch, optional).



F510



Kosmo Overcabs F200/F500



—
The perfect
space for
everything.
And for
everybody.

Kitchen

Kosmo exploits the spatiality of modern design for getting maximum comfort from each surface. Indeed, the kitchen with anti-scratch and anti-fingerprint top also has a very useful additional shelf, convenient for cooking your own recipes.



The soft light is gorgeous.



F510



Sleeping area

Sleeping is when we most need comfort and the Kosmo overcab mattresses will not disappoint your needs. The two front windows and the roof-light give airiness to the room, while the light effects in the rear bedroom will make you daydream.

Kosmo Overcabs F200/F500



F510

A comfort that will
leave you with your
eyes closed.





F510

Kosmo Overcabs F200/F500



F510



Bathroom

Kosmo Overcabs F200/F500





F510



—
Functionality
is in every
corner

Kosmo Overcabs F200/F500





Kosmo Motorhomes



Kosmo Motorhomes 900



The equipment which makes the difference

DESIGN & BODYWORK

- Front wheel drive
- Enlarged rear track
- Electronic Stability Control: ESP specific for campers, ABS, ASR, Hill Holder and Roll Over Mitigation
- Front and rear sway bar
- 6-speed + 1 manual gearbox
- Driver and passenger side dashboard airbags
- 75 l diesel tank
- Electrical power windows in cab
- Black bus type heated, electrically adjustable back view mirrors with wide angle”
- Radio antenna built into back rearview mirrors
- Day lights
- Headlight levellers
- Cup holder in cab
- 12 V and USB outlet in cab (max 180 W)
- Bottle holder on dashboard
- Very comfortable, height adjustable, swivel cab seating, with coordinated upholstery, headrest, two armrests, inclining backrest
- Adjustable height steering wheel
- Walls, roof and floor highly insulated with extruded polystyrene foam (XPS)
- Aluminium external walls, anti-yellowing
- Roof lined in hail protection fibreglass
- Fibreglass sub-floor in living area
- Driver’s door in cab with safety lock in open position”
- Rear designer wall
- High quality, flat frame windows with aluminium frame, blind and mosquito net
- External black/silver design graphics
- Exclusive Laika XXL living space door, 70 cm width, with fixed window, blind and insect screen
- Aluminium side skirts
- External LED light
- Centralised cab and living space door closure

- Single door key
- Large heated, insulated and lit garage and locker, “Easy Lock” locks and large doors on both sides
- Fastening rings for motorbike carrier
- Garage capacity 150 kg

INTERIOR & COMFORT

- Facilitated entrance with internal step (“coupé” entrance)
- Multi-level indirect lighting in lounge, kitchen and bedroom (under wall units), to create pleasant atmospheres
- Comfortable internal headroom with 213 cm: more space and stowage
- Interior design “Pero Toscano”
- “Pavia” upholstery with stain protection treatment
- Pull up curtains
- Increased door wall units with metal handles, Laika exclusive
- High gloss white wall units doors
- Ergonomic L-shaped living area with household type cushions for the best comfort (Kosmo 912: living area with opposing side sofas)
- Lounge cushions with removable lining
- Height-adjustable living room headrests (not for Kosmo 912)
- Extremely comfortable table which can be moved in all directions with easy handling
- 70x50 cm roof-light in living area
- Shoe compartment at living space entry
- Internal insulation / darkening system of the driver’s cab windows: vertical pleated blackout protection on the windscreen and side windows
- Drop-down bed with roof light and functional shelf, easy access, aluminium ladder, optimal internal height
- Area under drop-down bed with indirect light and reading lights
- Manually height-adjustable rear bed (Kosmo 912)

- Back high comfort, breathable mattresses with machine washable stretch lining
- Rear beds with wooden staves
- Adjustable reading lights on rear beds
- Extensive customization possibilities

KITCHEN & BATHROOM

- Trivalent 140 l refrigerator with automatic energy source selection (AES), with smoky covering and external inspection grille
- Scratch and fingerprint resistant kitchen and table tops
- Kitchen window design panel in metallic silver with brushed effect
- Dark glass protection panels for kitchen walls
- High gloss white kitchen with exclusive Laika handles
- Chromed sink
- Multi-purpose sink cover cutting board
- Sliding rail on right hand kitchen side: it allows to position the sink cover / cutting board (extra work space), not for Kosmo 912
- Indirect lighting under kitchen top
- 3-burner stove
- Automatic soft-close drawers
- Chrome metal spice rack shelf
- 230 V outlet in kitchen
- 40x40 cm roof-light in kitchen
- Possibility of bathroom window (opt)
- Waste water tank (antifreeze) with 18 l cassette

Dinette

The interior of Kosmo motorhome is pure Dolce Vita. The exclusive Laika design is enriched by innovative materials, with combinations that give style and elegance to the environment. The table and kitchen top in “stone effect” bronze laminate tie in beautifully with the chocolate tones of the aluminium Low-Profiles of the wall units with real metal handles.

Kosmo Motorhomes 900





Beauty is
around you



Kosmo Motorhomes 900

Kitchen

The glossy white of the kitchen contrasts with the dark bronze top, making the environment refined and exclusive, while the special silver-coloured laminate panel with brushed effect around the window gives a modern and attractive look. Design is supplemented with practicality, thanks to a three-burner cooktop and 140 litre fridge.



Luxury
is at home
here.





Sleeping area

Dolce Vita is both beauty and comfort. For this reason, the comfort of Kosmo Motorhome mattresses are accentuated by the large size of the twin beds, the height-adjustable central bed and the foldaway bed. They are all equipped with reading lights and USB sockets.

Kosmo Motorhomes 900



Comfort from A
to Zzz.





Kosmo Motorhomes 900



909

Bathroom

Kosmo Motorhomes 900





909



—
All the
comfort
you need.

Kosmo Motorhomes 900

The advantages of Kosmo



Italian interior design, “modern Laika look”

Colour effects thanks to the kitchen top and table with an oxidised metal effect, to the kitchen wall in silver metal with a brushed effect and to the under-wall unit Low-Profiles in “metallic chocolate” finish.



Comfort while sitting and resting

Standard L-shaped dinette with comfortable seats, height-adjustable headrests (not available on 512) and quality mattresses.



State of the art technique.

Indirect LED lighting at various levels (under the wall units and under the kitchen top), 5 USB sockets as standard.

Comfort always in your pocket.

Remote control for the habitation door integrated in the engine key.



Several possibilities for customisation

Including genuine leather and a wide range of accessories.



Kosmo



Superior standard equipment

Sunroof in driving cab, 70x50 cm roof-light above the living room, "Laika Magic" locks for garage doors, central locking of cab and living space, High comfort Captain Chairs in the cab, ventilation system for air circulation behind the wall units.





Also suitable for cold climates

The insulation in extruded polystyrene foam XPS as standard, the water heating (opt. for some models), the insulation of the grey water tank (Kosmo comfort pack) and the heated floor (opt.) make the Kosmo series suitable for any climate.

Kosmo

Comfort in the lounge area

Two additional seats with cushions and extendable table up to 140 cm in living (optional only for Laika overcabs).



Configure
Kosmo
to your needs



Standard configuration

Upholstery

Pavia



Wood

Pero Toscano



Optional upholstery

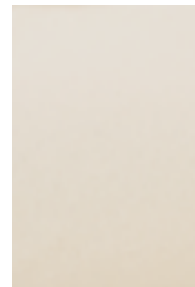
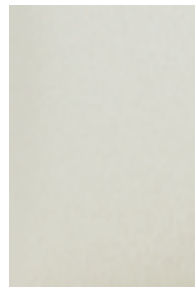
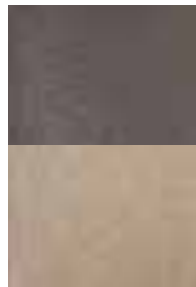
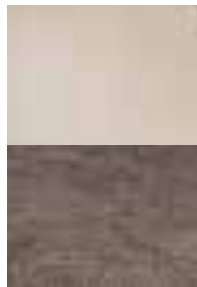
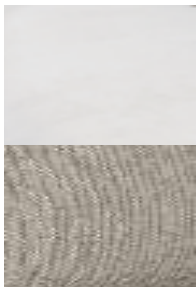
Alba

Garda

Merano

Firenze

Vip Club



Matera

Radda



Kosmo 2009 is available with a Mercedes Chassis.



Kosmo

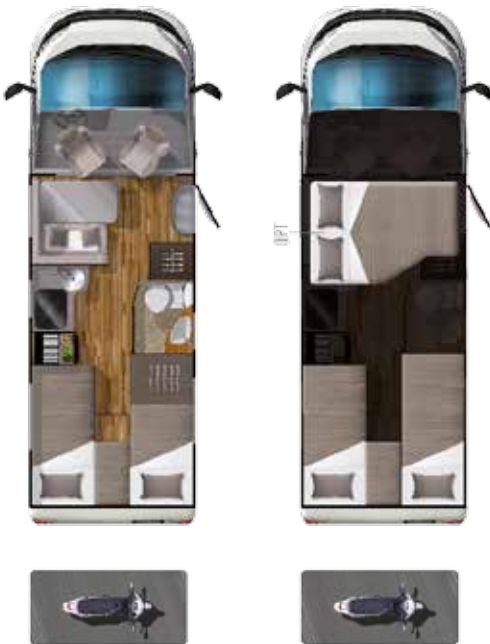
KOSMO

Plans

Kosmo

Low-Profiles

209



212

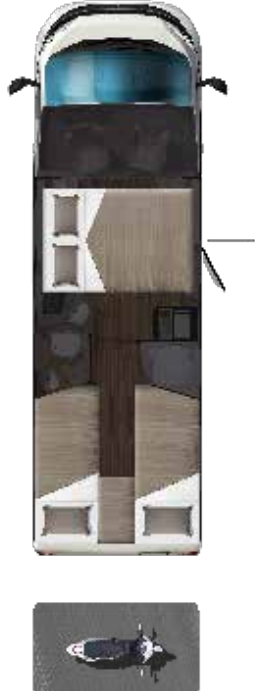


Low-Profiles

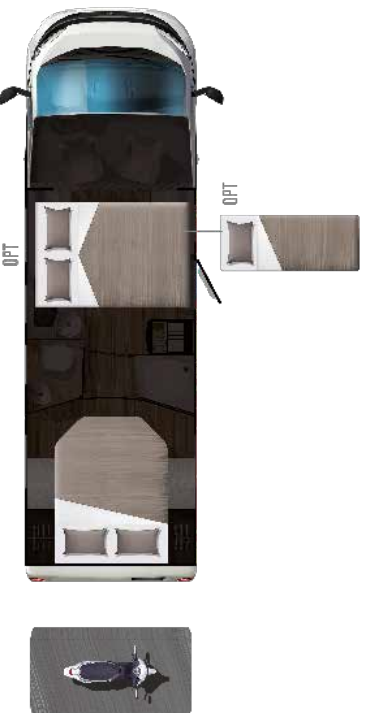
509



509 L



512



2009



Kosmo

Overcabs

F261



F510



Kosmo

Motorhomes

909



912





Ecovip

The world
is ready to
be admired

Ecovip





Elegance is comfortable

All the adventure and comfort you can imagine in one Ecovip. Feel free to change direction, but comfort will always be the best possible destination. Relax with family and friends before you leave for an unforgettable journey.

Ecovip

Start moving
new emotions.





Ecovip Low-Profiles 100/300/400



Ecovip Low-Profiles 100/300/400



The equipment which makes the difference

DESIGN & BODYWORK

- White driving cab with bumpers painted in white
- Front wheel drive
- Enlarged rear track
- Electronic Stability Control: ESP specific for campers, ABS, ASR, Hill Holder and Roll Over Mitigation
- Front and rear sway bar
- 6-speed + 1 manual gearbox
- Driver and passenger side dashboard airbags
- 60 l diesel tank
- Electrical power windows in cab
- Day lights built into headlights
- Headlight levellers
- Cup holder in cab
- 12 V and USB outlet in cab (max 180 W)
- Height adjustable driver's cab seat
- Swivel cab seating with headrest, two armrests, inclining backrest
- Ergonomic, very comfortable cab seating with upholstery coordinated with living room
- Adjustable height steering wheel
- Polyurethane wall and roof framework
- Walls, roof and floor highly insulated with extruded polystyrene foam (XPS)
- Aluminium external walls, anti-yellowing
- Roof lined in hail protection fibreglass
- Fibreglass sub-floor
- Highly insulated and heated overcab and cab/living area connection areas
- Rear designer wall
- High quality frame windows with silver polyurethane frame, flat window pane, blind and mosquito net
- External black/silver design graphics
- Exclusive Laika living space door with two-point closure, fixed window, blackout protection, insect screen and two removable and washable trash cans
- External LED light
- Centralised cab and living space door closure

- Single door key
- Large heated, insulated and lit garage and locker, "Easy Lock" locks
- Washable garage flooring with water drain plug (not for Ecovip 305)
- Garage capacity 250 kg

INTERIOR & COMFORT

- Insulated/upholstered ceiling with elegant Laika-Iso-Deluxe material
- Single living area level flooring without stairs (not for Ecovip 112)
- Two different furniture styles to choose from: classic/nautic style or younger/modern style
- Boat style pull up curtains
- Increased door wall units with metal handles, Laika exclusive
- White, elegant laminate and chrome insert wall units in the kitchen and living room
- Ergonomic L-shaped living area with household type cushions for the best comfort
- Lounge cushions with removable lining
- Extremely comfortable table, with chrome leg, movable in all directions with easy handling, 360° adjustable
- 70x50 cm roof-light in living area (b)
- Panoramic roof-light, opening, over the driving cab (Ecovip 112: fixed roof-light, "Galaxy View" over the driving cab)
- "Laika Magic" electric foldaway bed (opt) with one or two USB outlets, reading light/s and height under folding bed of 195 cm (Ecovip 112: 190 cm)
- TV viewable even from the folding bed
- Shoe compartment at living space entry
- Back "Ergonomy" high comfort, anti-mite, breathable mattresses with machine washable stretch lining
- Rear beds with wooden staves
- Adjustable reading lights on all beds
- Extensive customisation possibilities

KITCHEN & BATHROOM

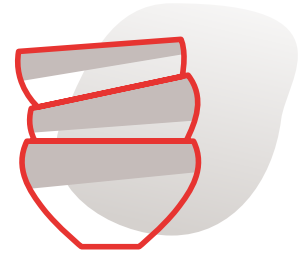
- Trivalent refrigerator with automatic energy source selection (AES), with smoky (or anthracite) covering and external inspection grille
- Scratch and fingerprint resistant kitchen and table tops
- Indirect lighting under kitchen top
- Multi-purpose sink cover cutting board
- Kitchen window design panel in metallic silver with brushed effect
- 3-burner stove (Ecovip 112: 2-burner stove)
- Automatic soft-close drawers
- Plexiglas and chrome metal spice rack shelf (not for Ecovip 112)
- Extractor hood with external vent
- 230 V outlet in kitchen
- 40x40 cm roof-light in kitchen
- High quality metal kitchen and bathroom mixer
- Extra high shower and towel rack
- Possibility of bathroom window (opt)
- Innovative water outflow system from the shower tray (Ecovip 312, 390, 409)
- Waste water tank (antifreeze) with 18 l cassette

Dinette

At a height of 2.10 m, the Ecovip Low-profile dinette is spacious, elegant and comfortable. There is no distinction between stopping and moving: the high ergonomics of the cushions ensure comfort in every situation.

Ecovip Low-Profiles 100/300/400





—
Make yourself
at home in
luxury.



Ecovip Low-Profiles 100/300/400

Kitchen

The practicality of the Ecovip low-profile table is enhanced by the elegance of the design. Enhancing the elegance further, the lighting of the kitchen top and wall cabinets will pamper your senses with their unique ambience



Immerse yourself in your passion.





Sleeping area

The Ecovip low-profile beds with wooden slats and Biolatex mattresses will pamper you all night long, while the separation door will guarantee your privacy.

Ecovip Low-Profiles 100/300/400



A corner
of paradise.



Ecovip Low-Profiles 100/300/400

Bathroom

The practicality of the large shower and the plentiful storage compartments adds to our refined Italian design.

Ecovip Low-Profiles 100/300/400





Elegance
is in every
detail.



The advantages of Ecovip Low-Profiles

Ecovip Low-Profiles 100/300/400



Interiors living up to your needs.

Ecovip Low-Profiles are also dedicated to the tallest: the internal height is 210 cm.



Beauty will protect you.

As well as being attractive, the padded ceiling is highly practical thanks to its insulating effect.





Comfort of the highest standard.

No risk of tripping: the living area floor is on a single level, without steps.



The space of your dreams.

There's a useful height of 195 cm under the optional foldaway bed, to ensure perfect liveability.



A 100% personal space

The entire interior space is designed to make the most of the liveability and storage of the Ecovip Low-Profiles thanks to the wall units up to 54 cm high and 40 cm deep and to the table that can be positioned as wished, to have more space in the living area.

Ecovip Low-Profiles 100/300/400



Comfort always in your pocket.

Remote control for the habitation door integrated in the engine key.

The smart light.

Indirect light above and beneath the wall units, flush with the wall, on the floor and under the kitchen top, ensures even, effective lighting, making Ecovip Low-Profiles particularly comfortable, any time of day. LED type, so as to keep power consumption low and yield high.



Living up to low temperatures.

The water system is domestic-style and in a frost-proof position, which all allows problem-free low-temperature travel.



The perfect temperature in any environment.

Thanks to the thermal trims and the passage of hot air pipes, Laika guarantees maximum insulation even in the most “sensitive” points, such as domes, attics and cab/living space connections.



Hot-dip galvanised counter-frame

The presence of this counter-frame increases the sturdiness and hold between chassis and living space (not for Ecovip 112).



Ecovip Motorhomes 600/700



Ecovip Motorhomes 600/700



The equipment which makes the difference

DESIGN & BODYWORK

- Fiat Ducato mechanics, Turbo Diesel Common Rail, Euro 6d Temp
- Front wheel drive
- Enlarged rear track
- Electronic Stability Control: ESP specific for campers, ABS, ASR, Hill Holder and Roll Over Mitigation
- Front and rear sway bar
- Driver and passenger side dashboard airbags
- 60 l diesel tank
- Electrical power windows in cab
- Back rearview mirrors in black, bus type, heated, electrically adjustable with wide angle
- Radio antenna built into back view mirrors
- LED day lights
- Headlight levellers
- Marine-type dashboard and cab door covering
- Cup holder in cab
- 12 V and USB outlet in cab (max 180 W)
- Very comfortable, height adjustable, swivel cab seating, with coordinated upholstery, headrest, two armrests, inclining backrest
- Polyurethane wall and roof framework
- Walls, roof and floor highly insulated with extruded polystyrene foam (XPS)
- Aluminium external walls, anti-yellowing
- Roof lined in hail protection fibreglass
- Fibreglass sub-floor
- Hot-dip galvanised counter-frame
- Double technical flooring with systems protected by double flooring, as an insulating chamber
- Two floor storage hatches
- Thermal/acoustic insulation between the driving cab and engine: heating system and insulating/soundproof panel
- Front automotive Xenon headlights, high performance

- Driver's door in cab: double closure, safety lock in open position, end-outline marker lamps and courtesy lighting
- Rear designer wall
- High quality frame windows with silver polyurethane frame, flat window panel, blind and mosquito net
- External black/silver designer graphics
- Exclusive Laika living space door with two-point closure, fixed window, blind, insect screen and trash can with removable and washable bins
- External LED light
- Centralised cab and living space doors closure
- Single door key
- Garage capacity 250 kg

INTERIOR & COMFORT

- Multi-level indirect lighting in lounge, kitchen and bedroom (above wall units, under wall units, along walls and on floor)
- Indirect lighting over and under wall units, both dimmerable, to create pleasant atmospheres
- Indirect lighting inside wall units
- Comfortable internal headroom with 205 cm: more space and stowage
- Insulated/upholstered ceiling with elegant Laika-Iso-Deluxe material
- Single living area level flooring without stairs
- Boat style pull up curtains
- Increased door wall units (up to HxW: 48x40 cm) with metal handles, Laika exclusive
- White, elegant laminate and chrome insert wall units in the kitchen and living room
- Ergonomic L-shaped living area with household type cushions for the best comfort
- Lounge cushions with removable lining

- Extremely comfortable table, with chrome leg, movable in all directions with easy handling, 360° adjustable
- 70x50 cm roof-light in living area
- Double technical flooring which acts as an insulating chamber
- Dual access wardrobe (from front and above): Ecovip 609, Ecovip 709
- Night-time courtesy lighting in living area with switch starting from drop-down bed
- Finishing under drop-down bed with white/blue dimmable lights with independent switches
- Back "Ergonomy" high comfort, anti-mite, breathable mattresses with machine washable stretch lining
- Rear beds with wooden staves

KITCHEN & BATHROOM

- Trivalent refrigerator with automatic energy source search (AES), smoky (or anthracite) covering, external inspection grille
- Scratch and fingerprint resistant kitchen and table tops
- Kitchen worktop with recessed sink cover/s
- Two chrome kitchen sinks (Ecovip 609 and Ecovip 612: one chrome sink)
- Kitchen window design panel in metallic silver with brushed effect
- 3-burner stove
- Designer lighting under kitchen worktop
- Extractor hood with external vent
- 230 V outlet in kitchen
- Plexiglas and chrome metal spice rack shelf
- Additional kitchen worktop
- Automatic soft-close kitchen drawers

Dinette

The living area of Ecovip motorhome takes care of your well-being with high comfort upholstery and high comfort seats. The absence of steps in the living area creates a unique environment, where there will be space for your friends.





—
Space for your
relaxation.



Ecovip Motorhomes 600/700

Kitchen

Don't be afraid of long journeys: the intelligent arrangement of the space allows storage of dishes and large quantities of supplies, while the worktop, chrome-plated steel fittings and large sinks cater to your culinary ambitions.



Space
for your passion.





Sleeping area

Ecovip motorhomes ensure dreams are always sweet, thanks to Biolatex mattresses with wooden slats and indirect lighting to create relaxing atmospheres.

Ecovip Motorhomes 600/700



Luxury matched
with comfort.



Ecovip Motorhomes 600/700



712



Bathroom

For Ecovip motorhomes, elegance is synonymous with well-being. The shower, the large sink and the numerous doors and shelves create a space designed for ease and comfort.





609



—
A space for
well-being.

Ecovip Motorhomes 600/700

The advantages of Ecovip Motorhomes

Ecovip Motorhomes 600/700



Don't give up your passions.

Ecovip Motorhomes are designed to have copious space for all your things, thanks to the width of the cabinets and the large garage equipped with anti-scratch floor.



Beauty will light up your days.

The indirect light above and beneath the wall units, flush with the wall, on the floor and under the kitchen top, ensures even, pleasant lighting, above all in the evening.





There's no space for discomfort.

From the garage, a door can be opened that provides immediate access to the tank, making the filling and draining operations, as well as checking, more practical.

Ecovip Motorhomes 600/700

Everything can be within reach.

Board control panel, digital, with LED Indicators.





Everything is in the right place.

The water system is domestic-style and in a frost-proof position, which all allows problem-free low-temperature travel.



The perfect temperature in any environment.

Thanks to the thermal trims and the passage of hot air pipes, Laika guarantees maximum insulation even in the most “sensitive” points, such as domes, attics and cab/living space connections.





Comfort of the highest standard.

Ecovip Motorhomes have a single level floor without steps.

Configure
Ecovip
to your needs



Standard configuration

Upholstery

Pavia



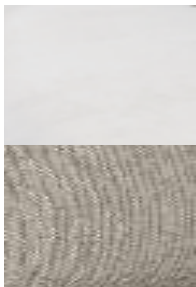
Wood

Noce Italiano

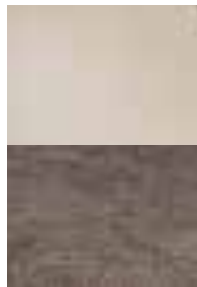


Optional upholstery

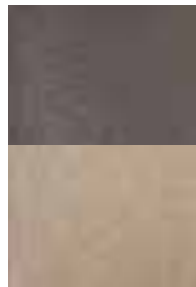
Alba



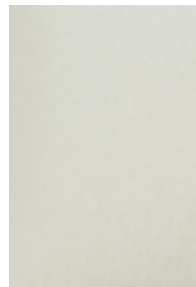
Garda



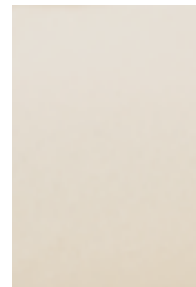
Merano



Firenze



Vip Club



Matera



Radda



Wood

Pero Toscano



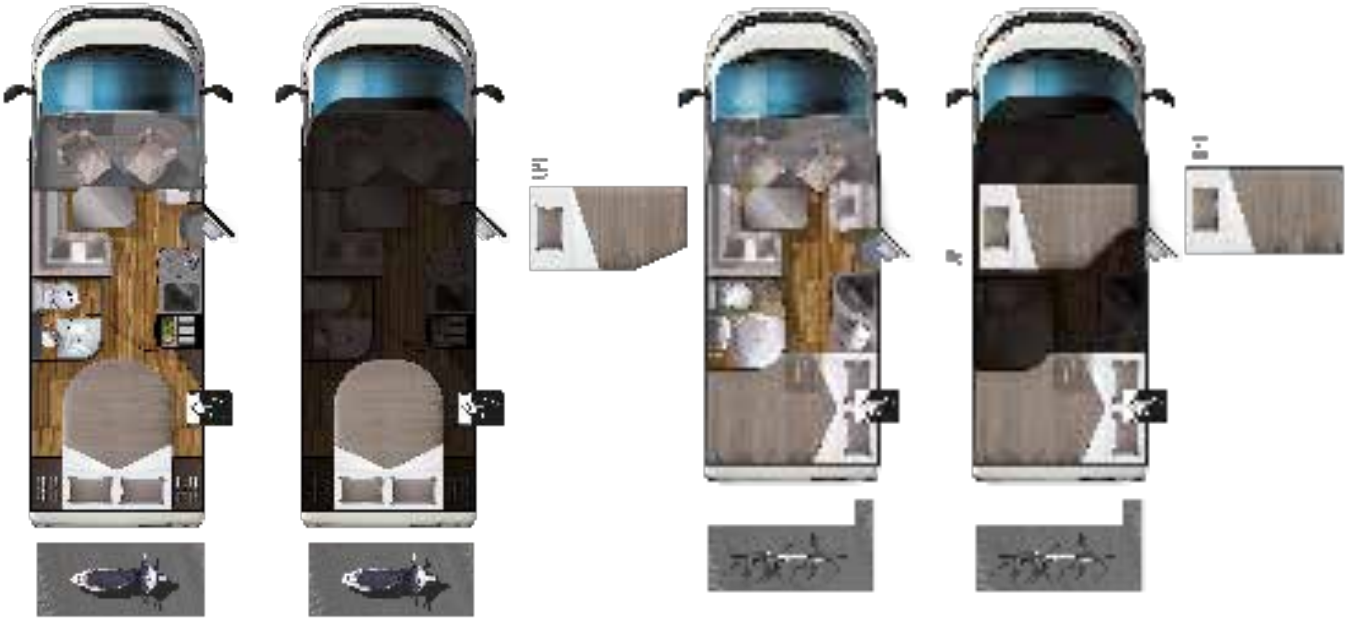
Ecovip

Plans

Low-Profiles

112

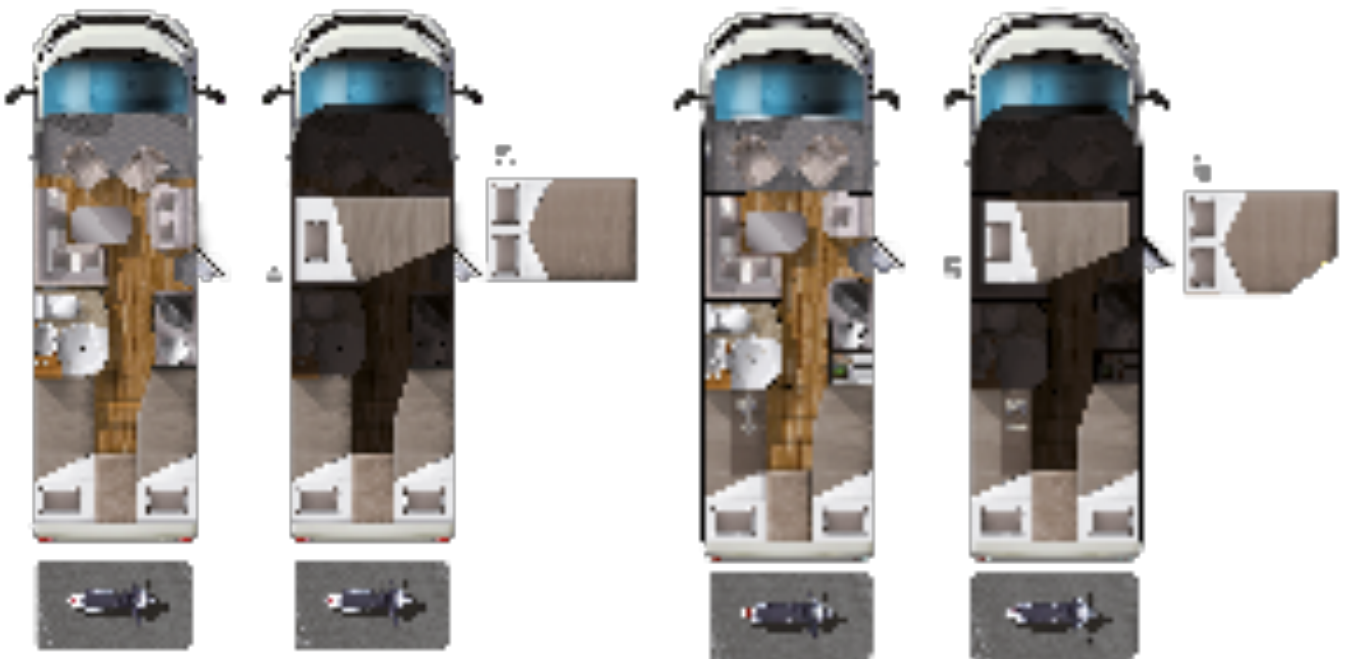
305



Ecovip - Plans

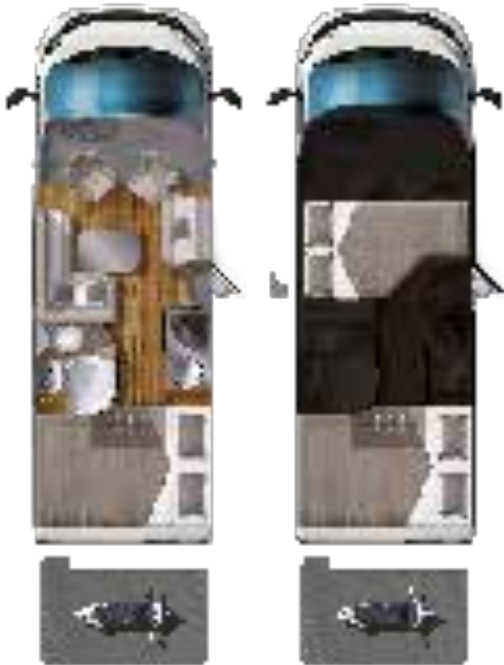
309

309s



Low-Profiles

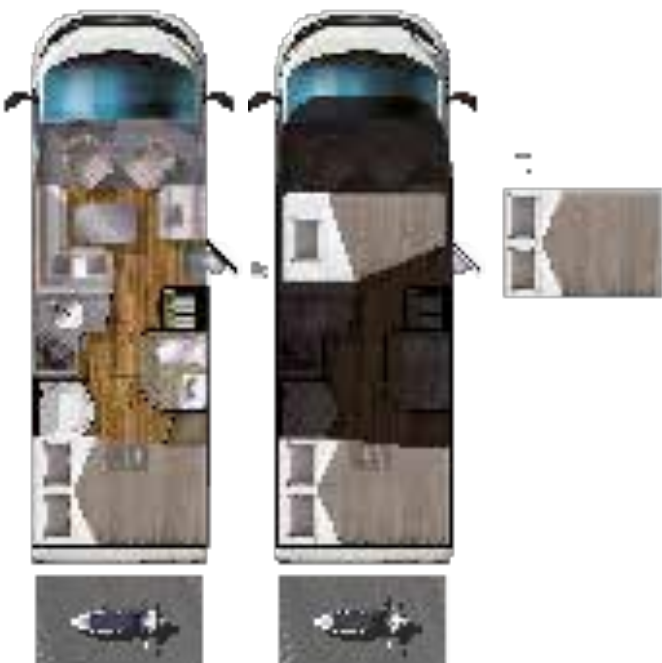
310



312



390

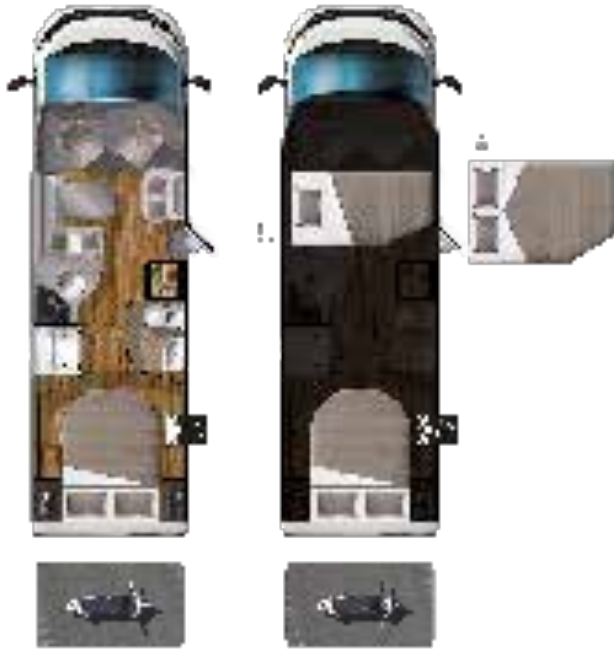


409

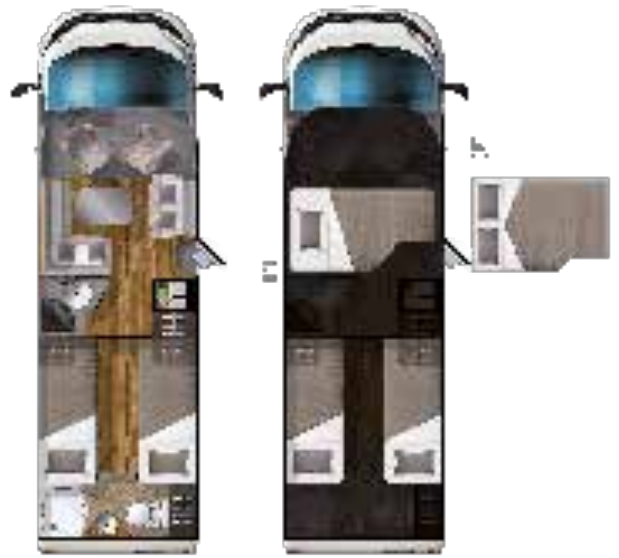


Low-Profiles

412



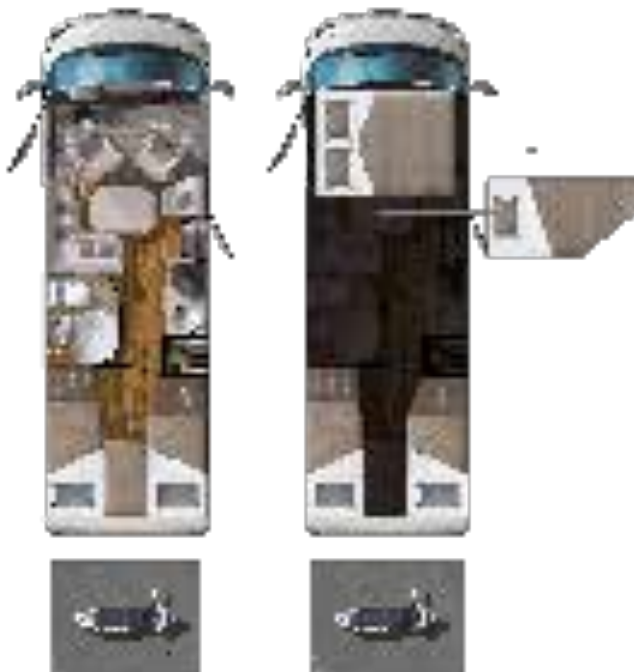
419



Ecovip - Plans

Motorhomes

609



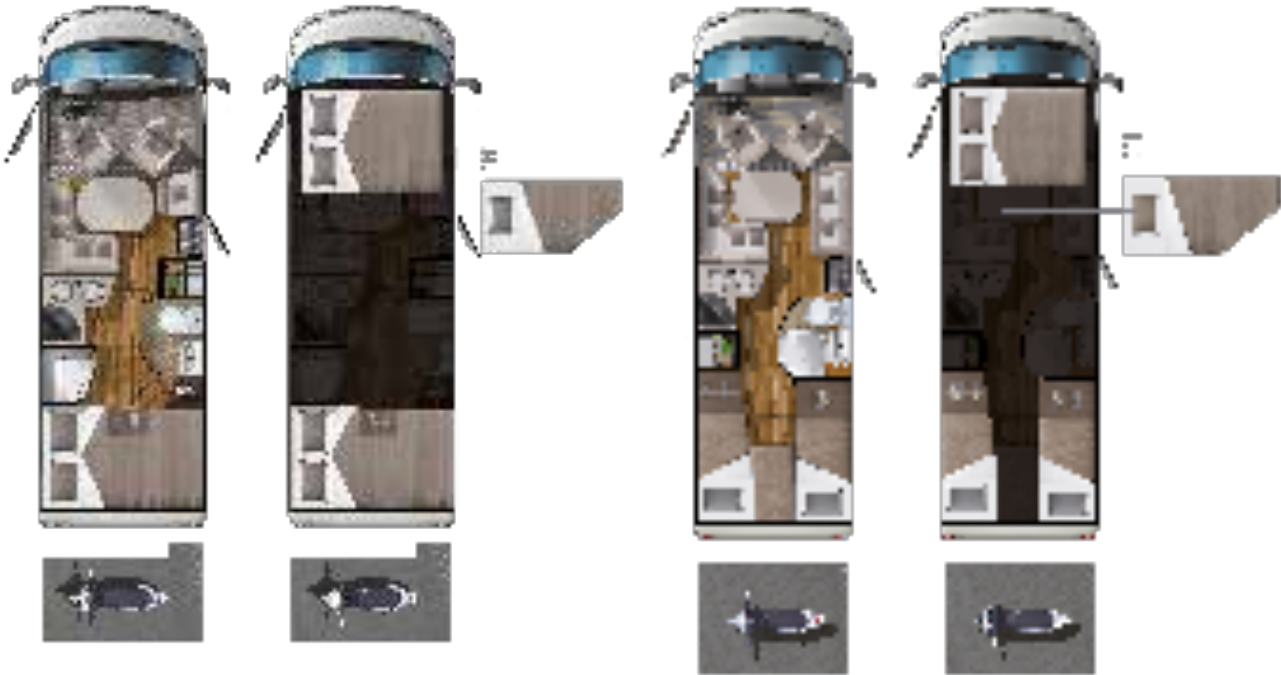
612



Motorhomes

690

709



Ecovip - Plans

712



Kreos

Luxury
knows
no limits

KREOS





Beauty is the best of destinations

Create new, spectacular memories, add life to your life,
look at the world with the eyes of those who seek beauty
and leave for the next destination.

The world is full of beauty to live in, Kreos is the most
elegant way to look for it.

Kreos

The difference between
travelling and moving.





Kreos Low-Profiles 3000/4000



Kreos Low-Profiles 3000/4000



The equipment which makes the difference

DESIGN & BODYWORK

- Silver driving cab with silver painted bumpers
- Front wheel drive
- Enlarged rear track
- Electronic Stability Control: ESP specific for campers, ABS, EBD, Traction+, Hill Holder, Hill Descent, Roll Over Mitigation
- Cruise control
- Front and rear sway bar
- Driver and passenger side dashboard airbags
- Electrical power windows in cab
- Heated, electrically adjustable rear view mirrors with wide angle
- Silver skid plate on front bumper
- Day lights built into headlights
- Headlight levellers
- Cab carpeting
- Dashboard with walnut effect inserts
- Dashboard fan vents with aluminium finish
- 12V outlet in cab (max 180 W)
- Two speakers in cab
- Swivel, height adjustable cab seating with headrest, two armrests, inclining backrest
- Ergonomic, very comfortable cab seating with upholstery coordinated with living room
- Adjustable height steering wheel
- Polyurethane wall and roof framework
- Walls, roof and floor highly insulated with extruded polystyrene foam (XPS)
- Aluminium external walls, anti-yellowing
- Roof lined in hail protection fibreglass
- Fibreglass sub-floor
- Hot-dip galvanised counter-frame
- Double technical flooring with heating and heat distribution grille
- Floor storage hatches
- Highly insulated and heated overcab and cab/living area connection areas
- Rear designer wall
- High quality frame windows with silver polyurethane frame, flat window pane, blind and mosquito net
- External silver and platinum graphic designs with 3D brushed effect

- Living space door with two-point closure, fixed window, blind, insect screen and trash can
- External LED light
- Electric closing step that can also be activated from the dashboard with warning light/buzzer on the dashboard
- Large sized, powder coated aluminium side skirts
- Centralised cab and living space door closure
- Single door key
- Garage capacity 250 kg

INTERIOR & COMFORT

- Multi-level indirect lighting in lounge, kitchen and bedroom (above wall units, under wall units along walls and on floor), to create pleasant atmospheres
- Indirect, dimmerable lighting over wall units
- Indirect lighting inside wall units
- Comfortable internal headroom with 210 cm: more space and stowage
- Insulated/upholstered ceiling with elegant Laika-Iso-Deluxe material
- Single level flooring without stairs in living area
- Increased height wall unit furniture, exclusive Laika metal handles, chrome Low-Profiles
- Mother-of-pearl methacrylate kitchen and lounge wall units, with iridescent, "Bianco Carrara" effect
- Large storage capacity
- Large ergonomic L-shaped living room with seamless cab/room integration and special backlighting
- Living area with comfort padding
- Lounge cushions with removable lining
- Height-adjustable living room headrests
- Extremely comfortable table which can be moved in all directions with easy handling, 360° adjustable
- TV rack compartment in living room
- Double technical flooring which acts as an insulating chamber

- Internal pleated sliding blackout protection in the cab, for the windscreen and side windows
- TV viewable even from the drop-down bed
- Rug for internal step, living room entry area
- Lit living room entry step
- Shoe compartment at living room entry
- Nautical type night-time floorlights
- Double flooring access hatches
- Ultra thick back "Wellness" anti-bacterial, anti-mite, breathable mattresses with machine washable stretch lining with silver ions
- Rear beds with wooden staves
- Large 96 x 65 cm roof-light in back room (not for Kreos 3008)
- Adjustable reading lights on all beds

KITCHEN & BATHROOM

- Large 160 l trivalent refrigerator with automatic energy source selection (AES), High Performance Cooler system with separate freezer, smoky mirrored covering, external inspection grille
- Household cooking surface with 4 gas grill burners and drainer (Kreos 3009S: 3-burner stove and gas oven without grill)
- Scratch and fingerprint resistant kitchen and table tops
- Additional removable or folding worktop
- Automatic soft-close drawers
- Exclusive Laika designer extractor hood with external vent and lights (Kreos 3009S: extractor hood with external vent)
- 230 V outlet in kitchen
- 40x40 cm roof light in kitchen
- High quality metal kitchen and bathroom mixer
- Large sized bathroom sink in nautical style porcelain material with soft-touch effect
- Maximum height shower, towel rack and white LED lighting
- Wooden footboard for shower tray

Dinette

Kreos 3000/4000 Low-Profiles always guarantee 5/6 seats even in models under 7 meters and are embellished with ergonomic cushions with differentiated padding.

A perfect space to invite old and new friends.

Kreos Low-Profiles 3000/4000



8012





A beauty
to share
with everyone.



Kreos Low-Profiles 3000/4000

Kitchen

Beauty and functionality are the ingredients of the Kreos 3000/4000 Low-Profiles kitchens: the kitchen shelves with retractable top and 4-burner cooktop are supplemented by chrome-plating and mother-of-pearl effects materials that give a refined elegance to the entire setting.



3009s





8012



—
Practically
gorgeous.



4009

Sleeping area

The Kreos 3000/4000 Low-Profiles line can have up to 5 berths even in the 6.99 m models and offers the possibility of choosing the preferred arrangement between a central bed or twin beds.

The comfortable rear beds are equipped with 14cm thick Laika Wellness mattresses, which are breathable, antibacterial and anti-mite with silver ion padding.

Kreos Low-Profiles 3000/4000



Comfort
at all times,
day and night.





4009



4012



Kreos Low-Profiles 3000/4000

Bathroom

A precious, nautical-type porcelain material, with soft-touch effect, gives the setting an exclusive look, while the large LED-lit shower with a standard wooden footboard shows all its versatility, transforming itself into a wardrobe, thanks to the special clothes rail.

Kreos Low-Profiles 3000/4000





4012



Wellbeing
as standard.

The advantages of Kreos 3000/4000

Kreos Low-Profiles 3000/4000



A tailored space of your dreams.

The maximum internal height in the Kreos 3000 and 4000 series is 2.10 m, so that even the tallest have all the space they need.



Experience a new level of comfort.

The living area has been designed completely without steps to ensure maximum safety and liveability.



We're aiming high.

The maximum height under the folding bed is 1.95 m, so you always feel at ease in an airy, elegant and bright environment.



Kreos Low-Profiles 3000/4000

Your passions deserve more space.

The garage compartment is designed to be even more spacious and resistant. The equipment is completed by two doors as standard, two light sources, a 12V/230V socket and a clothes rail.





Don't give up anything.

The hatches allow you to store everything you need in the double floor, accessible from the inside of the vehicle.

The bottom part of the floor is covered with fibreglass and the thick cover always guarantees excellent stability.



Hot-dip galvanised counter-frame

The presence of this counter-frame increases the sturdiness



Comfort at your command.

Board control panel, digital,
with LED Indicators.

Comfort always in your pocket.

Remote control for the habitation door
integrated in the engine key.







Kreos Low-Profiles 5000



Kreos Low-Profiles 5000



The equipment which makes the difference

DESIGN & BODYWORK

- Fiat Ducato mechanics, AL-KO
- Water heating system
- Silver driving cab with silver painted bumpers
- Front wheel drive
- Enlarged rear track
- 16" tyres
- Electronic Stability Control: ESP specific for campers, ABS, EBD, Traction+, Hill Holder, Hill Descent, Roll Over Mitigation
- Cruise control
- Front sway bar
- Reinforced rear suspension
- Driver and passenger side dashboard airbags
- Heated, electrically adjustable rear view mirrors with wide angle
- Radio antenna built into back view mirrors
- Silver skid plate on front bumper
- Silver cab door handles
- Original Fiat daytime LED lights
- Headlight levellers
- Cab carpeting
- Chrome Low-Profiles on dashboard instruments
- Dashboard fan vents with aluminium finish
- 12 V and USB outlet in cab (max 180 W)
- Two speakers in cab
- Swivel, height adjustable cab seating with headrest, two armrests, inclining backrest
- Polyurethane wall and roof framework
- Walls, roof and floor highly insulated with extruded polystyrene foam (XPS)
- Aluminium external walls, anti-yellowing
- Roof lined in hail protection fibreglass
- Two floors, both insulated and lined in fibreglass on three sides

- Double heated and lit flooring, accessible from the outside on both sides and from the inside by means of two hatches (48x33 cm, H 20 cm)
- Highly insulated and heated overcab and cab/living area connection areas
- Rear designer wall
- High quality frame windows with silver polyurethane frame, flat window pane, blind and mosquito net
- External silver and platinum graphic designs with 3D brushed effect
- Living space door with soft-touch finish, two-point closure, fixed window, blind, insect screen and trash can
- External LED light
- Large sized aluminium doors with pneumatic pistons for locker access in double flooring
- Centralised cab and living space door closure
- Single door key
- Garage capacity 250 kg

INTERIOR & COMFORT

- Multi-level indirect lighting in lounge, kitchen and bedroom (above wall units, under wall units, along walls and on floor), to create pleasant atmospheres
- Indirect, dimmerable lighting over wall units
- Indirect lighting inside wall units
- Comfortable internal headroom with 210 cm: more space and stowage
- Insulated/upholstered ceiling with elegant Laika-Iso-Deluxe material
- Single level flooring without stairs
- Large storage capacity
- Large ergonomic L-shaped living room with seamless cab/room integration and special backlighting
- Lounge cushions with removable lining

- Height-adjustable living room headrest
- Extremely comfortable table which can be moved in all directions with easy handling, 360° adjustable
- Double heated flooring which acts as an insulating chamber
- Internal pleated sliding blackout protection in the cab, for the windscreen and side windows
- "Laika Magic" electric foldaway bed (opt) with height under folding bed of 195 cm
- TV viewable even from the drop-down bed
- Rug for internal step, living room entry area
- Lit living room entry step

KITCHEN & BATHROOM

- Large 160 l trivalent refrigerator with automatic energy source selection (AES), High Performance Cooler system with separate freezer, smoky mirrored covering, external inspection grille
- Very large sized kitchen with precious Corian surface, large work area and below-surface lighting
- Two sinks with Corian sink cover, one of which also functions as a double-decker drainer
- Scratch and fingerprint resistant kitchen and table tops
- 3-burner stove
- Gas oven without grill
- Pull-out, sliding basket
- Large kitchen storage spaces
- Automatic soft-close drawers
- "Grand Chef" kitchen (opt) with integrated gas oven with grill and possibility to install a microwave (opt) (a)
- Extractor hood with external vent
- 40x40 cm roof-light in kitchen

Dinette

The large windows of the Kreos 5000 Low-Profiles perfectly illuminate the large living room, while the adjustable indirect light always creates the right atmosphere.

The 2.10m interior height and the smart arrangement of the spaces create a pleasant airiness and increase the stowage capacity of cabinets and wall units.

Kreos Low-Profiles 5000



5010





A natural
beauty.

Kreos Low-Profiles 5000



5009

Kitchen

The kitchen is worthy of the highest starred restaurants: spacious, tec-tower oven and large 160-l fridge. In addition, all the elegance of the backlit mirror panels and the Italian design in fine Corian.



The recipe
for elegance.



5010





Sleeping area

Dreams will finally be sweet, thanks to the spacious sleeping area and the precious design of the interiors. Wellness mattresses, adjustable room lighting, and brown capitonné headboards (opt.) will pamper you under any condition.

Kreos Low-Profiles 5000



Beauty is the most comfortable place to sleep.





Kreos Low-Profiles 5000

5009

Bathroom

Kreos Low-Profiles 5000





5009

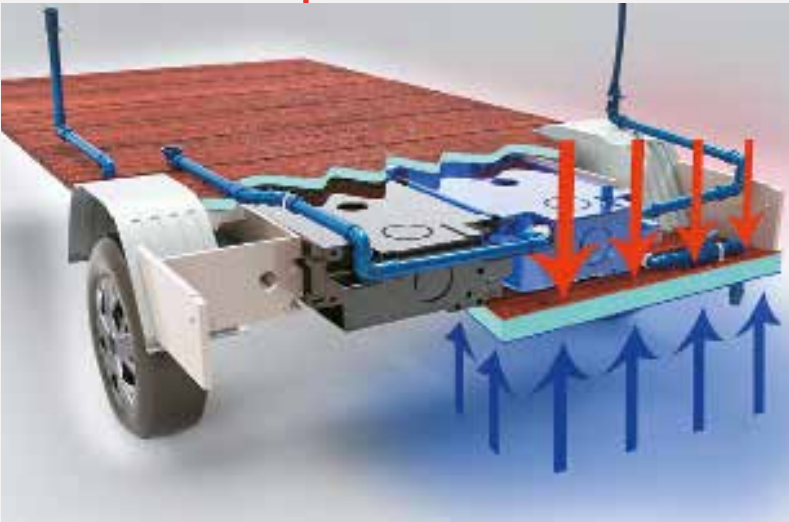


—
5-star
comfort.

Kreos Low-Profiles 5000

The advantages of Kreos 5000

Kreos Low-Profiles 5000



Comfort is everywhere.

The domestic style water system is frost-proof, which makes the motorhome perfect and for Winter travel.

Heating has never been so simple.

The excellent performance of the standard water heating is further enhanced by the structure of the Laika system (radiators in double flooring, in garage and in junction between cab and living space).



Every space is optimised as much as possible.

The compartment between the two floors has a height of up to 30 cm for loading bulky objects and insulating against outside temperatures.



It's easy to be comfortable.

The wardrobes under the two beds (Kreos 5009) can be accessed both from above and from the two front doors.



The kitchen of your dreams.

The large worktop, two sinks, tec-tower oven and appliance holder (opt.) built into the wall unit enable you to cook even the most complicated recipes.

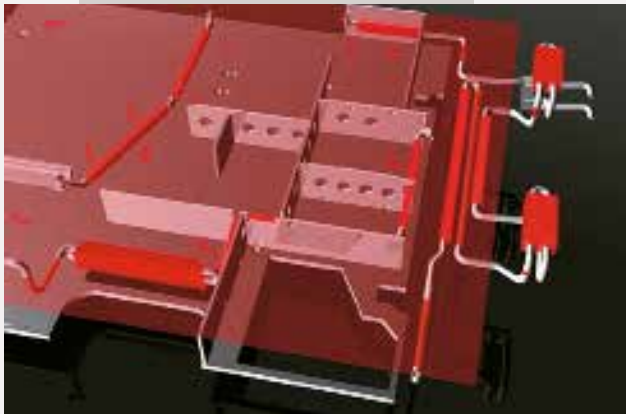




Comfort is in every corner.

The garage compartment is even more spacious and resistant. The equipment is completed by two doors as standard, two light sources, a 12V/230V socket, TV socket and a clothes rail.

Kreos Low-Profiles 5000



Living up to low temperatures.

Even in the most “sensitive” spots, such as domes and cab/living space junction, Laika guarantees maximum insulation thanks to suitable coverings and the routing of the warm area pipes.



A protection resistant to the coldest temperatures.

The thickness of the floor, walls and roof and the insulation material type and density make all Laika vehicles particularly suitable for winter use (cold chamber testing with temperatures as low as -20°).





Experience a new level of comfort.

Laika Kreos motorhomes have a single level, practical floor without steps.



Comfort always in your pocket.

Remote control for the habitation door integrated in the engine key.



Comfort in your hands.

Board control panel, digital,
with LED Indicators.





Kreos Motorhomes 7000



Kreos Motorhomes 7000



The equipment which makes the difference

DESIGN & BODYWORK

- Fiat Ducato Heavy chassis, AL-KO
- Front wheel drive
- Enlarged rear track
- Electronic Stability Control: ESP specific for campers, ABS, EBD, Traction+, Hill Holder, Hill Descent, Roll Over Mitigation
- Water heating system
- Cruise control
- Front sway bar
- Reinforced rear suspension
- Driver and passenger side dashboard airbags
- Electrical power windows in cab
- Bus type heated electrical back view mirrors, painted the same colour as the bodywork with wide angle, independent movement (wide angle/ main mirror)
- Radio antenna built into back view mirrors
- Front automotive Xenon headlights with dynamic indicator
- LED day lights
- Headlight levellers
- Cab carpeting
- Dashboard with faux leather stitched inserts and walnut effect inserts
- Nautical internal cab covering
- 12 V and USB outlet in cab (max 180 W)
- Two speakers in cab
- Very comfortable, height adjustable, swivel cab seating, with coordinated upholstery, headrest, two armrests, inclining backrest
- Alloy wheels 16", Fiat original parts
- Polyurethane wall and roof framework
- Walls, roof and floor highly insulated with extruded polystyrene foam (XPS)
- Aluminium external walls, anti-yellowing
- Roof lined in hail protection fibreglass
- Two floors, both insulated and lined in fibreglass on three sides

- Compartment in double flooring heated and lit, accessible from the outside on both sides and from the inside by means of hatches
- Thermal/acoustic insulation between the driving cab and engine: heating system and insulating/soundproof panel
- Back LED automotive headlights
- Car-like aluminium engine grille
- Engine bonnet with automotive opening
- Driver's door in cab: double closure, safety lock in open position, end-outline marker lamps and courtesy lighting
- Possibility of passenger door in cab (opt)
- Rear designer wall
- High quality frame windows with silver polyurethane frame, flat window pane, blind and mosquito net
- 3D brushed effect external graphic design
- High-quality living quarters entrance door, two-point closure, fixed window, blind, trash can and insect screen
- External LED light
- Garage capacity 250 kg

INTERIOR & COMFORT

- Multi-level indirect lighting in lounge, kitchen and bedroom (above wall units, under wall units along walls and on floor), to create pleasant atmospheres "
- Insulated/upholstered ceiling with elegant Laika-Iso-Deluxe material
- Single level flooring without stairs down to the rear area"
- Mother-of-pearl methacrylate kitchen and lounge wall units, with iridescent, "Bianco Carrara" effect and soft closing
- Indirect, dimmerable lighting over and under wall units
- Optimal wardrobe lighting with vertical LED strip

- Ergonomic L-shaped household type living area, extremely comfortable padding and indirect lighting under the living room seating"
- Height-adjustable living room headrests
- Lounge cushions with removable lining
- Extremely comfortable table which can be moved in all directions with easy handling, 360° adjustable
- Option of two other table top types (opt): round or rectangular with book-type closing, to take up as less space as possible
- Double heated flooring which acts as an insulating chamber

KITCHEN & BATHROOM

- Large 160 l trivalent refrigerator with automatic energy source selection (AES), High Performance Cooler system, separate freezer, smoky mirrored covering, external inspection grille
- Gas oven without grill
- Very large sized kitchen with precious Corian surface, large work area and below-surface lighting
- Two sinks with Corian sink cover, one of which also functions as a double-decker drainer
- Scratch and fingerprint resistant kitchen and table tops
- Methacrylate panel with backlighting around kitchen window
- 3-burner stove
- Sliding shelf with Corian surface
- "Grand Chef" kitchen (opt) with integrated gas oven with grill and possibility to install a microwave (opt) (b)
- Pull-out, sliding basket
- Large kitchen storage spaces
- Automatic soft-close drawers

Dinette

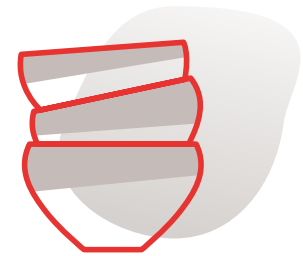
In the Kreos Motorhome 7000 series, Italian design and elegance find their maximum expression in the large dinette with fine material trims, where every space is organised to make you feel at home.

Kreos Motorhomes 7000





7009



—
All the luxury
you didn't
know you
wanted.



7009

Kreos Motorhomes 7000

Kitchen

Indirect light enhances the curved shapes and large spaces of the work surfaces, made of high-quality “Corean soft touch”, while the large storage compartments will make every holiday more comfortable. The kitchen of the Kreos Motorhome 7000 series is designed to satisfy your desire for elegance and comfort.

Available on request is the “Grand Chef” kitchen with 3-burner hob and gas oven with grill.



A kitchen that satisfies the most demanding needs.



7012





Sleeping area

The bedroom is spacious and well-lit, both during the day through the large roof-light, and at night, thanks to the luxury lighting, with backlit inserts in the corners that create a dreamlike atmosphere, every night.

The smart arrangement of the spaces also makes it possible to create three different zones separated by a door.

Kreos Motorhomes 7000

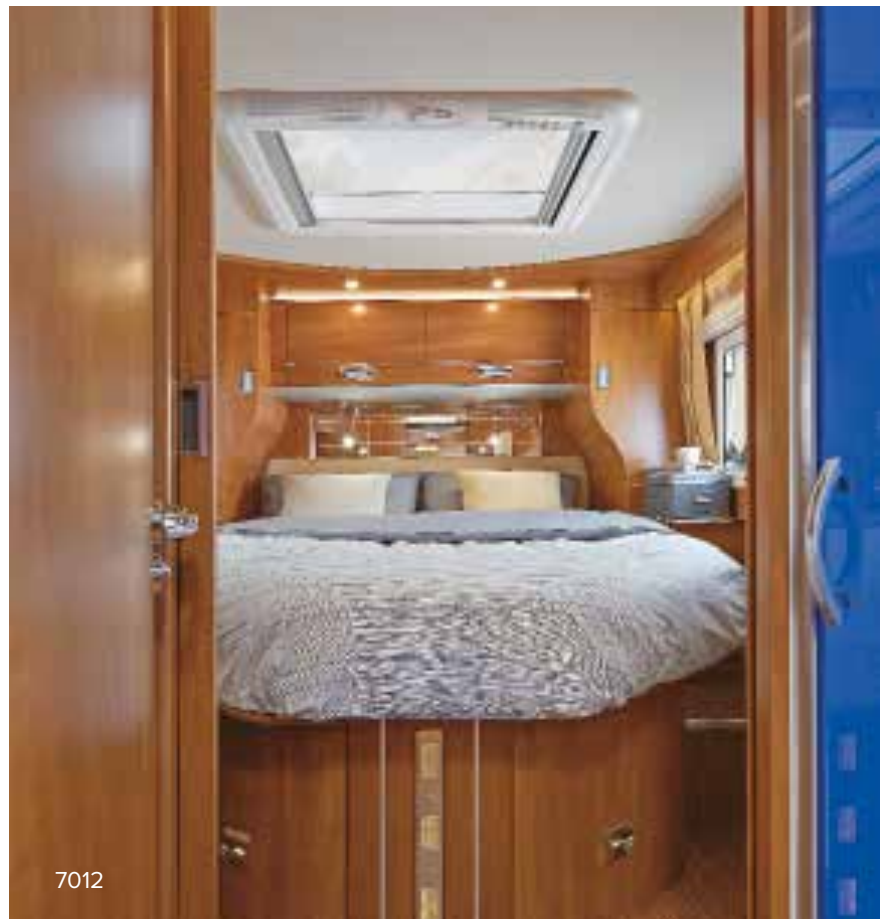


Elegance
never sleeps.





Kreos Motorhomes 7000



7012

Bathroom

Relaxation is guaranteed by the large shower, with double drain and white and blue lights. Moreover, the two shelves allow it to be used as a wardrobe, when not in use.





A great
beauty
in a small
space.

Kreos Motorhomes 7000

The advantages of Kreos 7000

Kreos Motorhomes 7000



Cold chamber testing.

The thickness of the floor, walls and roof and the insulation material type and density make all Laika Motorhomes particularly suitable for winter use (cold chamber testing with temperatures as low as -20°).



Doubled comfort.

The large double floor (height up to 37.5 cm) is illuminated, heated and covered with fibreglass at the top and bottom.



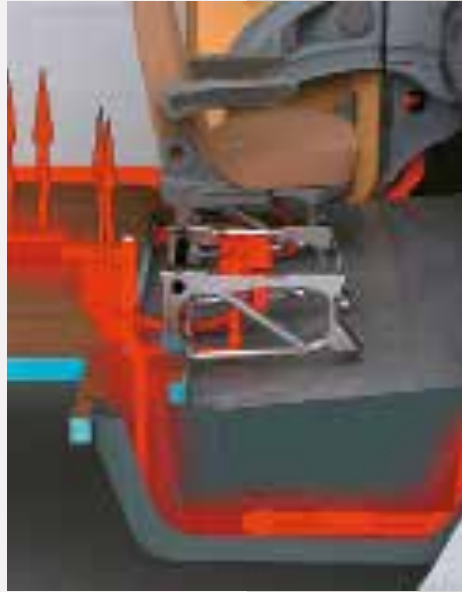
Comfort always in your pocket.

Remote control for the habitation door integrated in the engine key.



Laika Thermo Cab System.

This advanced heating system includes radiators and warm air vents under the seats, in the door perimeter area and above the dashboard.



The perfect mood.

All Kreos motorhomes have indirect light above and below the wall units.





All the space you want.

The garage floor is lowered to make it more spacious and accessible. The equipment is completed by two doors as standard, water drain, fixing rings and clothes rail.



Be welcomed with elegance.

Your Laika always gives you a warmwelcome when you come home: every time you unlock the vehicle, the outside and an inside light turn on and the step opens for you to get in.





Comfort at every step.

Laika motorhomes have a single level,
practical floor without steps.

Everything within reach.

Board control panel, digital,
with LED Indicators.







Kreos Motorhomes 8000



Kreos Motorhomes 8000



The equipment which makes the difference

DESIGN & BODYWORK

- Iveco Daily
- Rear-wheel drive, twin wheels
- ESP, ABS, EBD, ASR, Hill Holder
- Cruise control
- Alloy wheels
- Coach-type electric rear-view mirrors, heated, painted in the same colour as the bodywork, with wide angle, featuring independent movement (wide angle / main mirror)”
- DAB radio aerial built into the rear-view mirrors
- Front automotive Xenon headlights with dynamic indicator
- LED daytime running lights
- Headlight alignment corrector
- Carpeted cab
- Automotive-type interior cab trim
- Two in-cab speakers
- Very comfortable, height adjustable, swivel cab seating, with coordinated upholstery, headrest, two armrests, inclining backrest
- Walls and roof with polyurethane framework
- Walls, roof and floor highly insulated with extruded polystyrene foam (XPS)
- Aluminium external walls, anti-yellowing
- Hail-resistant fibreglass covered roof
- Two floors, both insulated and lined in fibreglass on three sides
- Compartment in double flooring heated and lit, accessible from the outside on both sides and from the inside by means of hatches
- Thermal/acoustic insulation between the driving cab and engine: heating system and insulating/soundproof panel
- Aluminium automotive-type engine grille
- Engine bonnet with automotive opening

- Electric step to facilitate entry to cab, on both driver’s and passenger’s side, with automatic operation when opening/closing doors
- Rear designer wall
- Automotive LED rear lights
- High quality frame windows with silver polyurethane frame, flat window pane, blind and mosquito net
- Exterior graphics with brushed 3D effect
- External LED light
- Electric step for living area that can also be closed from the dashboard with warning light/acoustic indication on the dashboard
- Large powder-coated aluminium side skirts
- Maxi aluminium doors, with pneumatic pistons, for access to the locker in the double flooring
- Garage capacity 350 kg

INTERIOR & COMFORT

- Multi-level indirect lighting in lounge, kitchen and bedroom (above wall units, under wall units along walls and on floor), to create pleasant atmospheres
- Innovative and refined white light colour temperature adjustment system: warmer or cooler, via remote control, independently between living area and sleeping area (not for Kreos 8002)
- Dimmable indirect lighting
- Optimal wardrobe lighting with vertical LED strip
- Ceiling insulated/covered with fine Laika-Iso-Deluxe material
- Floor on a single level, without steps, from the driving cab up to the rear bedroom
- Maxi wall units (up to 48×40 cm, HxW) with metal handles, Laika exclusive, with indirect internal lighting

- Mother-of-pearl methacrylate kitchen and lounge wall units, with iridescent, “Bianco Carrara” effect and soft closing
- Ergonomic L-shaped household type living area, extremely comfortable padding and indirect lighting under the living room seating”
- Height-adjustable living room headrests
- Lounge cushions with removable lining
- Extremely comfortable table which can be moved in all directions with easy handling, 360° adjustable

KITCHEN & BATHROOM

- Large 160 l trivalent refrigerator with automatic energy source selection (AES), High Performance Cooler system, separate freezer, smoky mirrored covering, external inspection grille
- Gas oven, without grill
- Maxi kitchen with fine Corian top, large work surface and under-top lighting
- Two sinks, with Corian cover, one of which with dual function: sink and two-level draining rack
- Scratch and fingerprint resistant kitchen and table tops
- Methacrylate panel with backlighting around kitchen window
- 3-burner stove
- Sliding shelf with Corian surface
- “Grand Chef” kitchen (opt) with integrated gas oven with grill and possibility to install a microwave (opt)
- Pull-out, sliding basket
- Large kitchen storage spaces
- Automatic soft closing on drawers

Dinette

Let yourself be welcomed by the beautiful shapes, but also by the details of the Kreos Motorhome 8000 series dinette. Choose the shape of the table (rectangular, round or rectangular thanks to the folding table) and find the perfect atmosphere thanks to the adjustable lights.



8012





8009



Elegance
never goes
out of fashion.



8009

Kreos Motorhomes 8000

Kitchen

The elegance of the kitchen will make your mouth water: spacious and well organised, finished with refined details and fine materials.

The possibility of having the “Grand Chef” kitchen enriches the options of this range.



A brilliant kitchen for your favourite homemade dishes.





Sleeping area

The sleeping area can be customised with twin beds or with a large central bed, both with orthopaedic springs and height-adjustable backrest. Deciding is easy, when all choices lead to comfort.

Kreos Motorhomes 8000



8009

Bring your dreams
to life.





Kreos Motorhomes 8000



Bathroom

The domestic-type shower with white and blue LEDs is not only harmonious but also comfortable, thanks to the removable shelves for wardrobe use.

Kreos Motorhomes 8000





—
Nothing
is left
to chance.



Kreos Motorhomes 8000

The advantages of Kreos 8000

Kreos Motorhomes 8000



Choose the atmosphere you prefer.

You can adjust the intensity of the light and choose the tone (not for Kreos 8002), from the coldest to the warmest light, using your remote control. Also, the lights of the living area and sleeping area can be adjusted independently, making the atmosphere more pleasant in the various areas of the motorhome.





Big garage.

Spacious, low floor, with washable ABS lining and water drain. It has 12 V, 230 V and TV sockets, double LED lighting, fixing bars with movable rings and a clothes rail with sliding rings.

Open the doors to comfort.

Comfort is guaranteed by the extra-large door made from fine materials and the Laika Welcome Home system, which permits the opening of the entrance step and activation of the external and internal light by remote control.



Kreos Motorhomes 8000



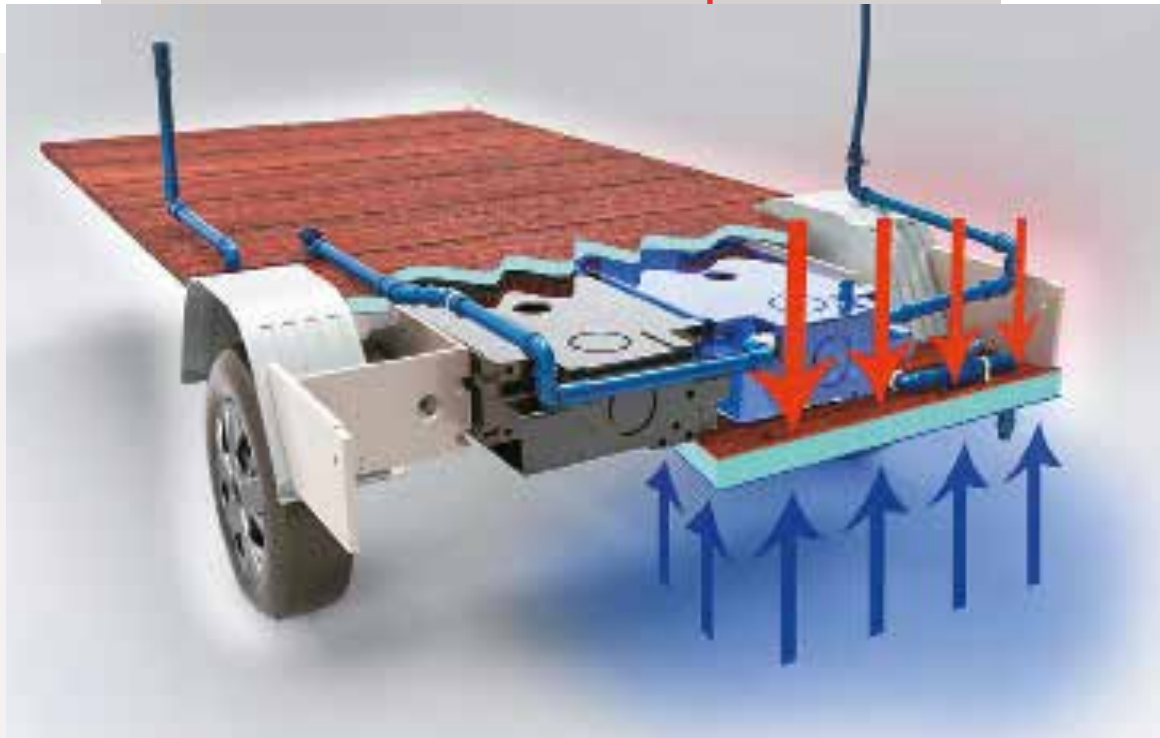
Upgraded living room.

The extensive living area is designed to ensure the utmost comfort, with the floor on a single level all the way from the dashboard to the bathroom.



Cab entrance steps as standard.

In the driving cab, comfort is at maximum levels, thanks to the passenger door as standard (not for Kreos 8002) and the cab entrance steps, extractable on both sides, that allow not only the driver but also their travel companions to get on and off with the greatest ease when stopped.



Pipes and fittings.

The water system is domestic-style and in a frost-proof position, which all allows problem-free low-temperature travel.

Configure
Kreos
to your needs



Standard configuration

Upholstery

Lucca



Wood

Noce Italiano



Optional upholstery

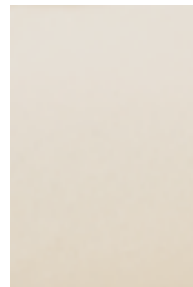
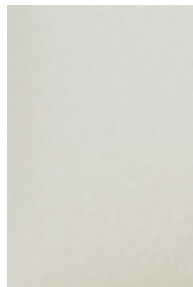
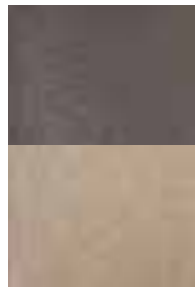
Assisi

Garda

Merano

Firenze

Vip Club



KREOS

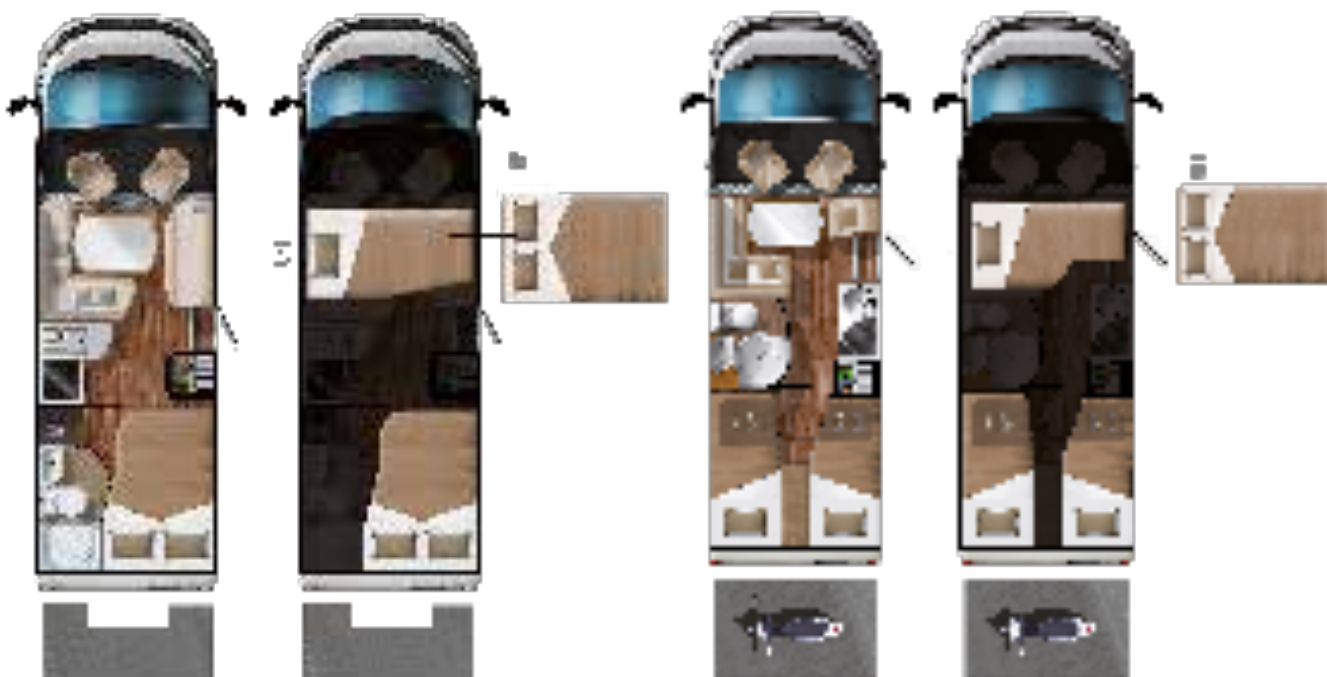
Plans

Kreos - Plans

Low-Profiles

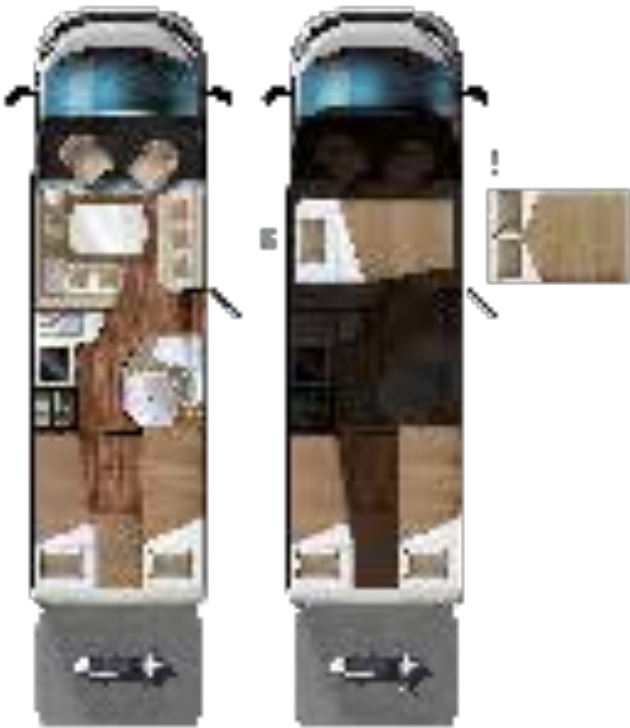
3008

3009s



Low-Profiles

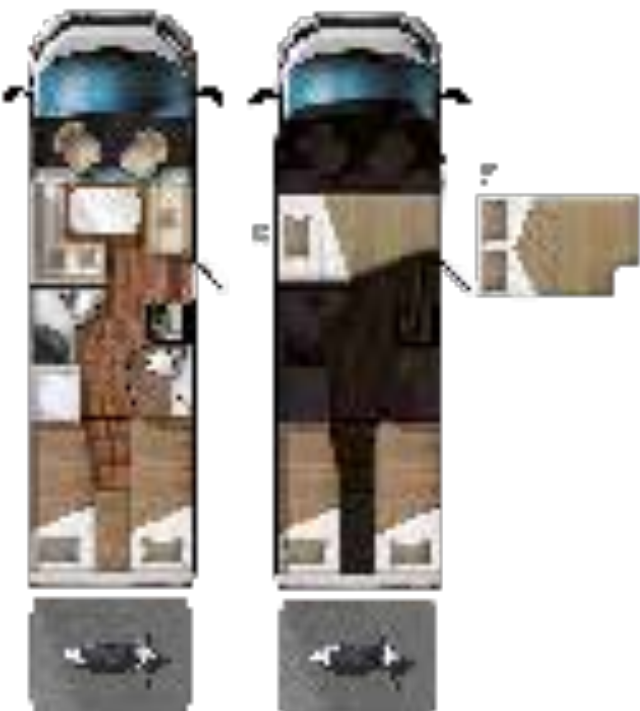
4009



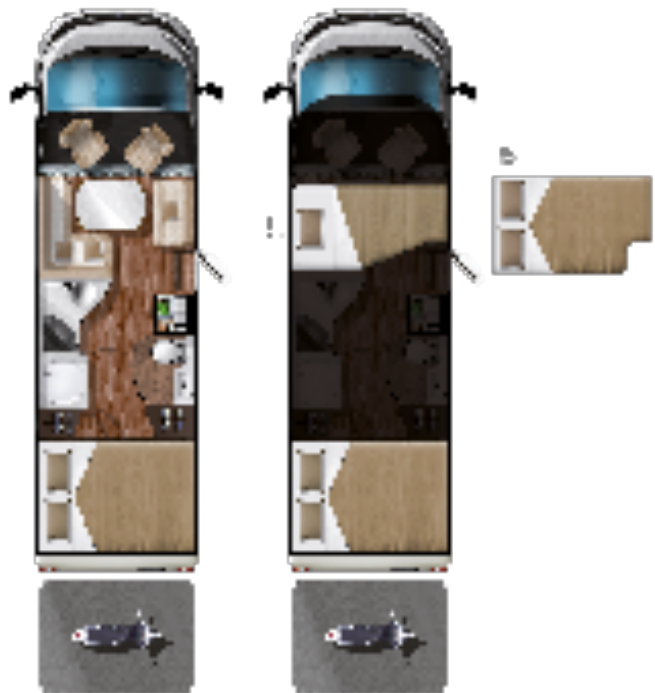
4012



5009



5010

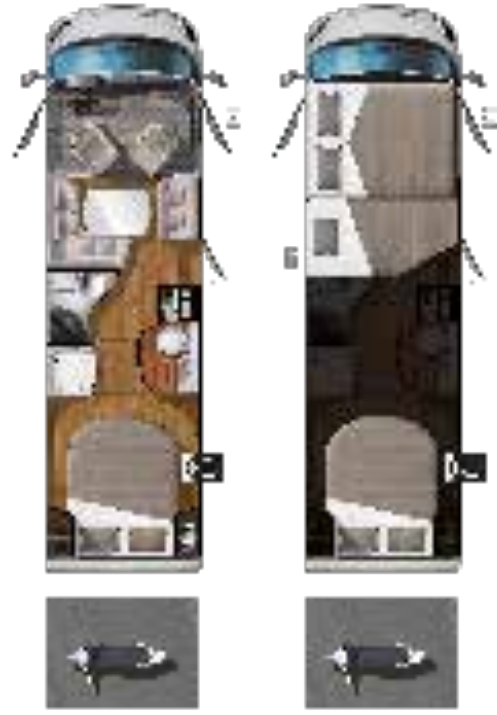


Motorhomes

7009



7012

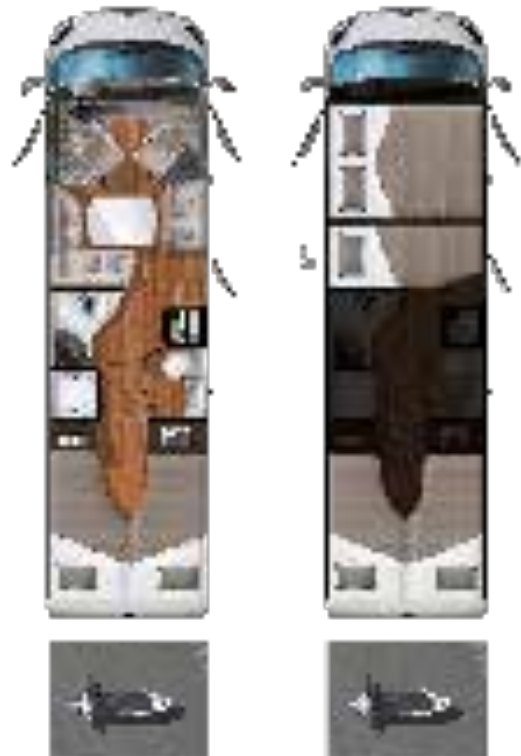


Kreos - Plans

8002



8009



8012



Atelier

Atelier Laika





**Every
Laika
is unique.**





The artists' studio.

All Laika motorhomes are designed and built with all the passion and painstaking care that distinguishes genuine artists. The manual quality and craftsmanship of Tuscan manufacturing tradition lends our vehicles a distinct character and strong personality. A passion for beauty and attention to detail are some of the essential ingredients that Laika manufacturers draw on.





Building emotions.

We only use the best in Laika interiors, including the wood we use. We only work with the finest of materials, those able to offer you the best both aesthetically and over time: every Laika is designed to last, both inside and out.

A light on beauty.

We work to illuminate you with beauty. That's why we study the lights in the environments to create colour contrasts and unique effects, to let you discover where beauty is hidden even when it's difficult to notice and create atmospheres that are always unique.





From dream to reality.

Resting is one of the most important stages of travel and we know it. We choose only the most comfortable mattresses for you, so you'll experience unique emotions during the day, but also at night.

Lengths

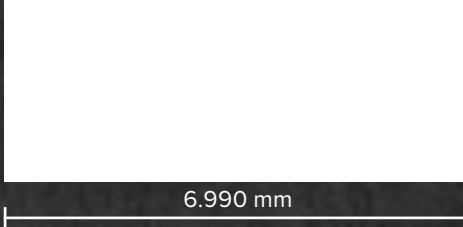
Lengths



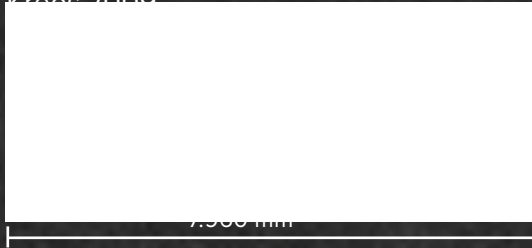
LENGTHS

KREOS

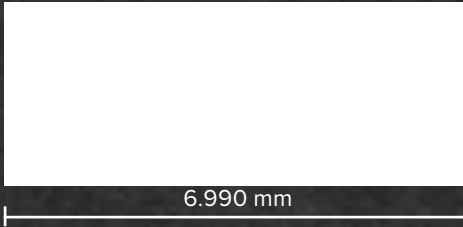
Kreos 3008



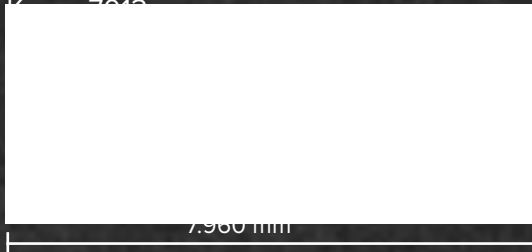
Kreos 7009



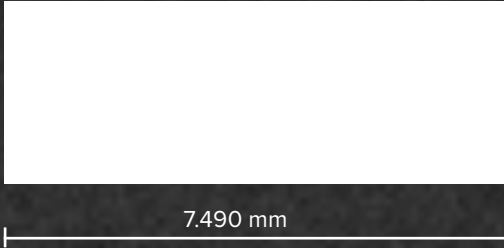
Kreos 3009S



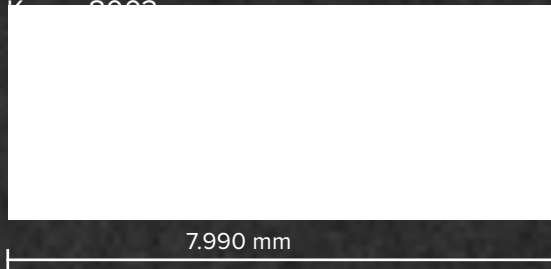
Kreos 7010



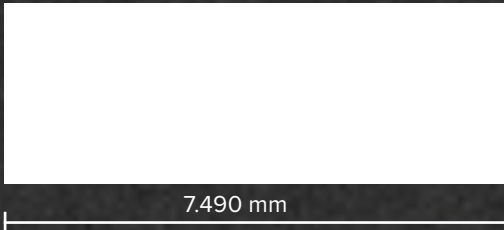
Kreos 4009



Kreos 8009



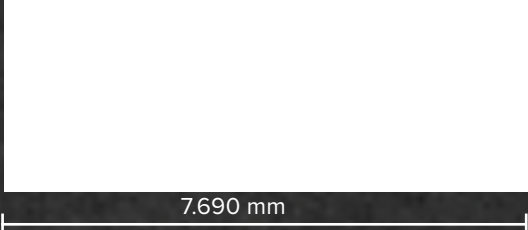
Kreos 4012



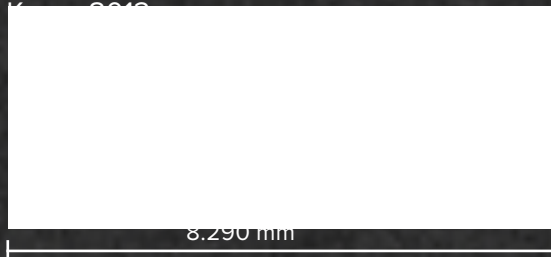
Kreos 8010



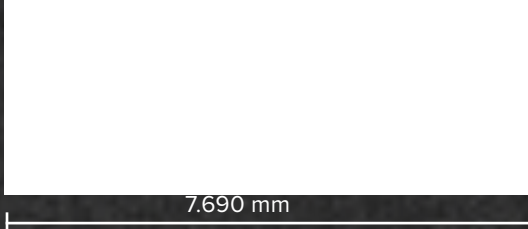
Kreos 5009



Kreos 8012



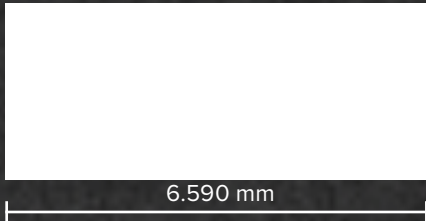
Kreos 5010



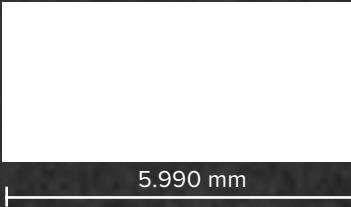
LENGTHS

Ecovip

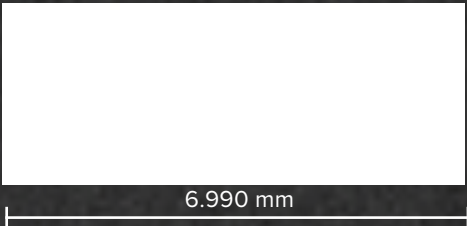
Ecovip 112



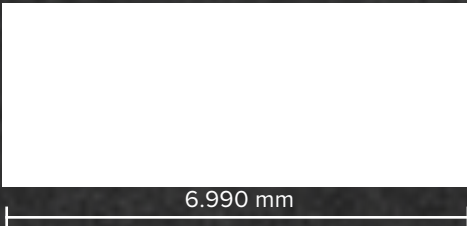
Ecovip 305



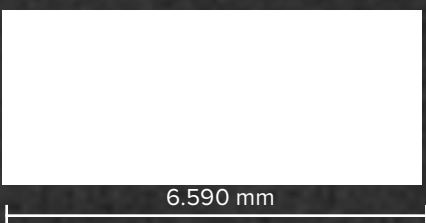
Ecovip 309



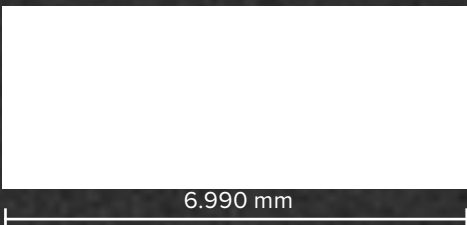
Ecovip 309S



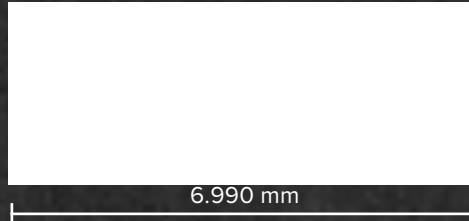
Ecovip 310



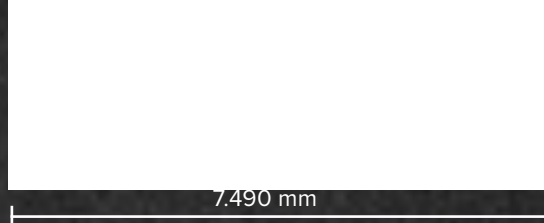
Ecovip 312



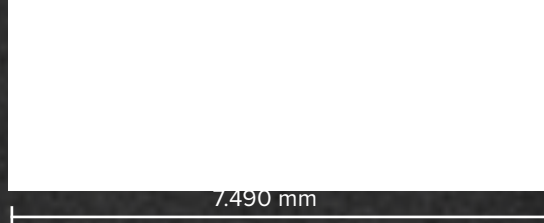
Ecovip 390



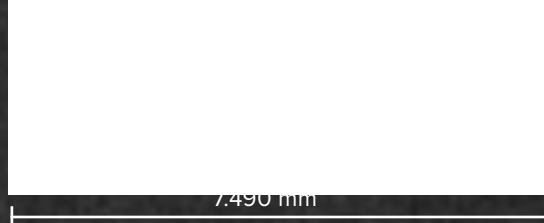
Ecovip 409



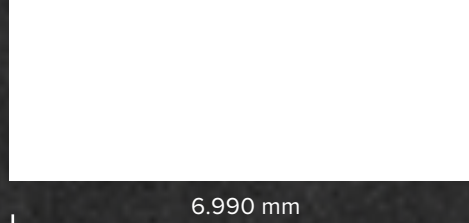
Ecovip 412



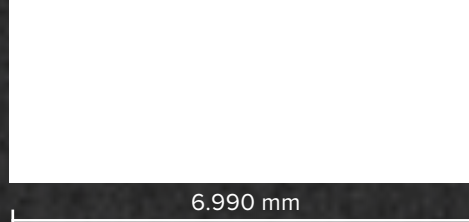
Ecovip 419



Ecovip 609




Ecovip 612





Laika Caravans S.p.A. | Via Certaldese 41/A | 50026 San Casciano in Val di Pesa (FI)

www.laika.it | LaikaCaravan  | [laika_caravans](https://www.instagram.com/laika_caravans) 